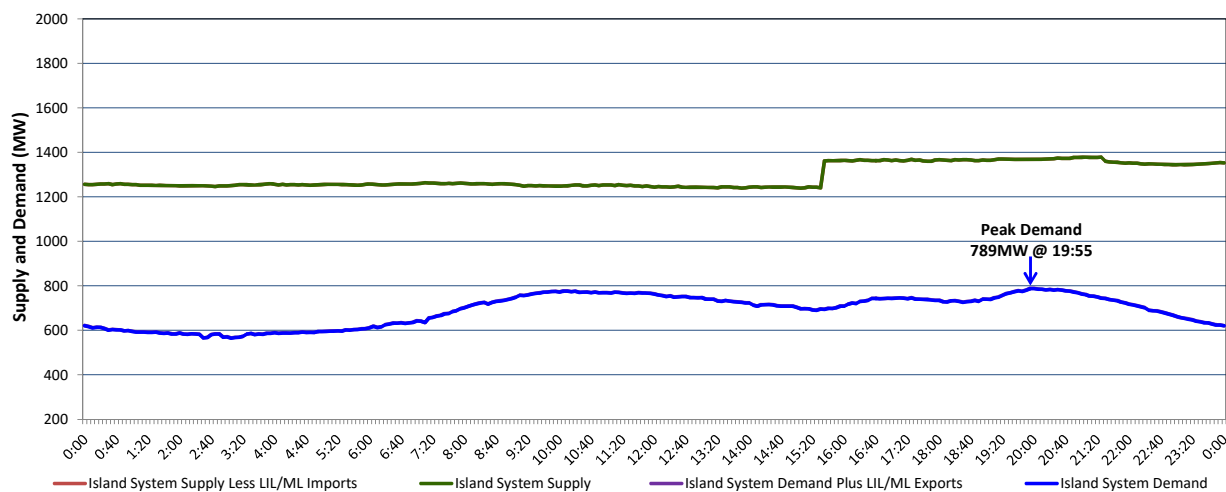


Newfoundland Labrador Hydro (NLH) Supply and Demand Status Report Filed Monday, September 21, 2020

Section 1 Island Interconnected System Supply, Demand & Exports Actual 24 Hour System Performance For Sunday, September 20, 2020



Supply Notes For September 20, 2020

1,2

- A As of 0853 hours, June 21, 2020, Holyrood Unit 3 available but not operating (150 MW).
- B As of 0808 hours, July 15, 2020, Holyrood Unit 2 unavailable due to planned outage (170 MW).
- C As of 1811 hours, September 02, 2020, Holyrood Unit 1 available but not operating (170 MW).
- D As of 1748 hours, September 13, 2020, Bay d'Espoir Unit 7 unavailable due to planned outage (154.4 MW).
- E At 1535 hours, September 20, 2020, Holyrood Gas Turbine available (123.5 MW).

Section 2 Island Interconnected Supply and Demand

Mon, Sep 21, 2020	Island System Outlook ³	Seven-Day Forecast	Temperature (°C)		Island System Daily Peak Demand (MW)	
			Morning	Evening	Forecast	Adjusted ⁷
Available Island System Supply: ⁵	1,365 MW	Monday, September 21, 2020	7	7	855	855
NLH Island Generation: ⁴	1,050 MW	Tuesday, September 22, 2020	9	11	845	845
NLH Island Power Purchases: ⁶	80 MW	Wednesday, September 23, 2020	17	17	760	760
Other Island Generation:	235 MW	Thursday, September 24, 2020	13	13	770	770
ML/LIL Imports:	- MW	Friday, September 25, 2020	11	11	790	790
Current St. John's Temperature & Windchill:	4 N/A °C	Saturday, September 26, 2020	10	12	745	745
7-Day Island Peak Demand Forecast:	855 MW	Sunday, September 27, 2020	15	16	710	710

Supply Notes For September 21, 2020

3

- Notes:
1. Generation outages for running and corrective maintenance are included. These are not unusual for power system operations. They generally do not impact customer supply. The power system operators schedule outages to system equipment whenever possible to coincide with periods when customer demands are low and sufficient supply reserves are available. However, from time to time equipment outages are necessary and reserves may be impacted.
 2. Due to the Island system having no synchronous connections to the larger North American grid, when there is a sudden loss of large generating units there may be a requirement for some customer's load to be interrupted for short periods to bring generation output equal to customer demand. This automatic action of power system protection, referred to as under frequency load shedding (UFLS), is necessary to ensure the integrity and reliability of system equipment. Under frequency events have typically occurred 5 to 8 times per year on the Island Interconnected System and the resultant customer load interruptions are generally less than 30 minutes. With the activation of the Maritime Link frequency controller during the winter of 2018, UFLS events have occurred less frequently.
 3. As of 0800 Hours.
 4. Gross output including station service at Holyrood (24.5 MW) and improved NLH hydraulic output due to water levels (35 MW).
 5. Gross output from all Island sources (including Note 4).
 6. NLH Island Power Purchases include: CBPP Co-Gen, Nalcor Exploits, Rattle Brook, Star Lake, Wind Generation and capacity assistance (when applicable).
 7. Adjusted for curtailable load, market activities and the impact of voltage reduction when applicable.

Section 3 Island Peak Demand Information Previous Day Actual Peak and Current Day Forecast Peak

Sun, Sep 20, 2020	Actual Island Peak Demand ⁸	19:55	789 MW
Mon, Sep 21, 2020	Forecast Island Peak Demand		855 MW

- Notes: 8. Island Demand / LIL / ML Exports (where applicable) is supplied by NLH generation and purchases, plus generation owned and operated by Newfoundland Power and Corner Brook Pulp & Paper (Deer Lake Power, DLP).